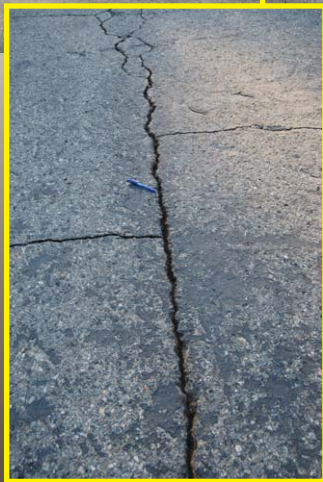
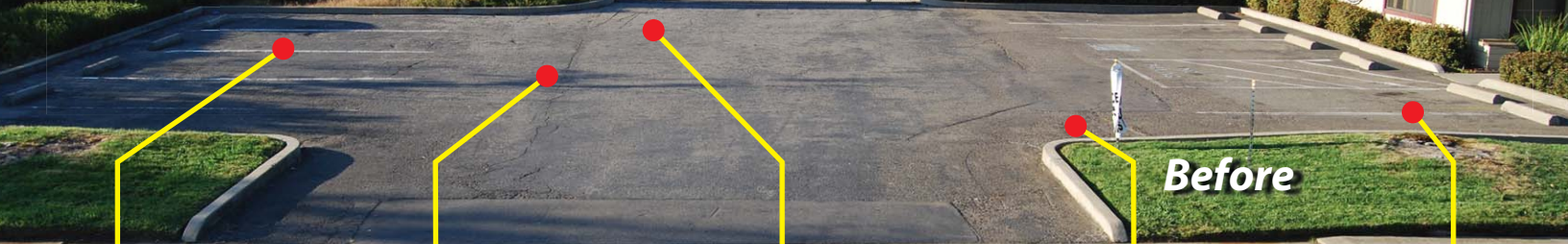
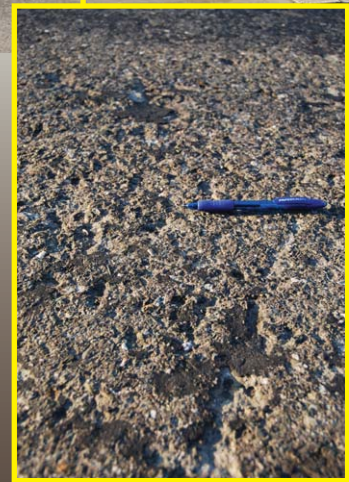


It costs HOW MUCH to replace?! **This Property Saved over \$6,500** **Visibility & Curb Appeal Restored!!**



Large Cracks
Allows water to penetrate into substrate and breakdown base



Pitting
Tired looking rough texture caused by oxidation/water eroding the fine aggregates



Block Cracks/Alligating
Removal & Replacement is usually the only option



Rutting
Another wet season and this may have become a pothole



Oil/Grease Spots
Saturates then softens the asphalt which leads to decay

Does your pavement suffer from any of these common failures?

When the down economy forces a reduction to your maintenance budget or if you waited longer than intended to implement your pavement preservation program, then you may have just found the breakthrough solution!



Restore the Value & Appeal to your Property and Pavement Asset!



After

Ruts & Large Crack Mix

Single package Slurry with added aggregate solids will provide the lift your pavement needs.



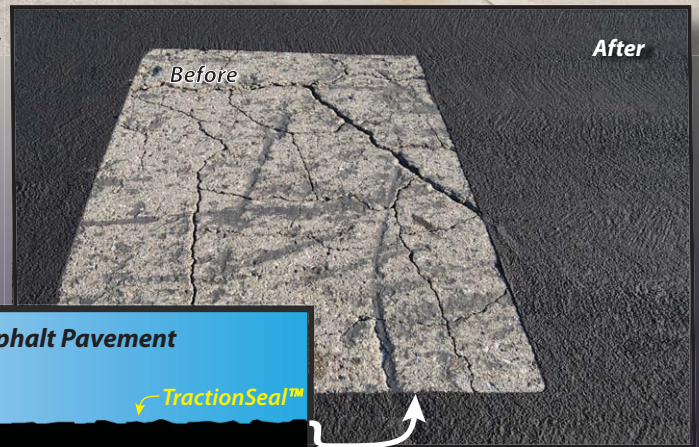
90% Solids Mix / Low Shrinkage

Proper fill of rutting and large cracks will restore the profile back to your asphalt pavement.

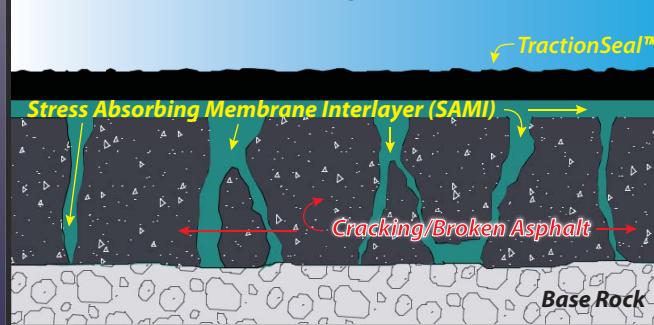
TractionSeal™ Single Package Slurry

This is the final step of a comprehensive system to raise your pavement's index.

The spray applied composite road surface delivers a strong adhesive matrix that restores durability, waterproofing, UV/IR protection and rideability for years of worry free service life.



Cross Section of Restored Asphalt Pavement



SAMI

May also be used as a crack-sealant. Achieves excellent flexible waterproofing properties as tested against premium hot pour sealant.



Grime Prime

Prepares the Oil/Grease spot and mitigates thermal pumping of oil into new surface.

Reference Project Example (4,355 SF Parking Lot)	Service Life in Years	Approximate Cost	Cost / Year	Comment
Remove & Replace w/Hot-Mix Asphalt	16-20 Years	\$15,000+	\$750	Will be brand new again
Hot-Mix Overlay w/Petromat Underlayment	10-12 Years	\$9,000+	\$750	Looks new for first 5 years, then will begin to show underlying stress of telegraphing cracks
TractionSeal™ w/Pre-Treatments	6-8 Years	\$2,200	\$275	Compares favorably to the aesthetics and performance of Hot-mix overlay
Seal Coat w/Crackfill only	1-3 Years	\$900	\$300	Looks black but will not provide profile restoration or hide existing cracks, pits, etc.

Advancements in polymer chemistry have produced the first 'Single Package' slurry that out performs other surface treatments currently available and provides the best option to expensive paving alternatives.



For more information please visit www.ecostarscience.com or call 916.387.8797